



**WORLD'S BEST
ALLOY BULLBARS**

East Coast Bullbars (ECB Pty Ltd)

Tel: 07 3897 5700

Fax: 07 3283 1168

ecb@ecb.com.au www.ecb.com.au

29 Snook St
Clontarf QLD 4019

Australia

Po Box 122
Margate QLD 4019

Australia

BC55SY

REPLACES: 00.00.00

REVISED: 23.05.11

FITTING INSTRUCTIONS

CHEVROLET SILVERADO 2011on WINCH COMPATIBLE BIG TUBE™ BAR (WITH FOG LAMPS) VEHICLE FRONTAL PROTECTION SYSTEM (VFPS) FOR AIR BAG & ADR COMPLIANT VEHICLES

Check installation hardware before commencing.

1. Lift bonnet
2. Remove grille to radiator support cover, eight push pull plastic clips.
3. From air opening on bumper, disconnect air damming from front bumper. (Five plastic Christmas tree plugs.)
4. From under bumper, remove two 10mm nuts from inner guards to bumper.
5. Remove bumper stays. One 15mm bolt (per side) from bumper end and two 15mm bolts (per side) from chassis end. **See figure 1.** Disconnect fog lights.
6. Remove two 21mm bolts from bumper brackets. Access from behind grille. **See figure 2.**
7. Remove bumper from vehicle.
8. Remove bumper brackets and tow hook from front of chassis rails (two 21mm nuts on factory “u” bolts) and one 19mm bolt and nut and 19mm anti twist bolt from tow hook.
9. Fit ECB Steel inner mounting brackets (supplied) to inside of chassis rails using three ½ x 5 ½ bolts and flat washers and one 1 x 1 ½ bolt, flat washers, spring washers and nut (per side)(supplied). Fit ECB Steel outer mounting brackets to outside of chassis rail. Attach using flat washer, spring washer and nut (supplied). On lower bolt place space tube on inside of chassis rail over bolt. **See figure 3.** Tighten bolt on underside of chassis only.
10. Fit fairlead rollers to side of winch frame with rectangular cut out using ½ x 1 ¼ bolt flat washers, spring washers and nut (supplied) (place bolt through from inside to front of mount).
11. Remove lower tie bar from winch and refit to back of winch using 6mm Allen key. Place winch into winch frame with motor end to passenger’s side of frame. **Note:** Winch rope will feed from underside of winch. Attach to underside of winch frame using four 7/16 x 1 ½ bolts, flat washers and spring washers supplied with winch. Fit two 7/16 x 1 ½ bolts, flat washers and spring washers (supplied) to winch from rear of winch frame. Ensure wire winch rope is passed through fairlead rollers upon installation of winch. Fit hook to wire rope. **See figure 4.**
12. **For 12,000lb Warn Winch** - Fit control box to winch motor. Clamp in position with large hose clamps (supplied with winch) socket on control box mounted vertically on winch. Connect cables to motor as indicated.
13. **For 15,000lb Warn Winch** – Fit ECB control box bracket (supplied) to winch mounting bracket on passengers side. Use two 3/8 x 1 ¼ bolts, nuts, flat and spring washers (supplied). **TIGHTEN** roller fairlead. Bolt control box to ECB bracket using original nuts. **TIGHTEN IN POSITION.** Connect cables to motor as indicated in winch instructions. **See figure 5.**



**WORLD'S BEST
ALLOY BULLBARS**

East Coast Bullbars (ECB Pty Ltd)

Tel: 07 3897 5700

Fax: 07 3283 1168

ecb@ecb.com.au www.ecb.com.au

29 Snook St
Clontarf QLD 4019

Australia

Po Box 122
Margate QLD 4019

Australia

14. With the help of a second person, place winch frame onto inner steel mounting brackets, between outer steel mounting brackets. Attach to mounts using four ½ x 1 ½ bolts, flat washers, spring washers and nuts (supplied) on lower points of mounts and one ½ x 1 ½ bolts, flat washers, spring washers and nuts (supplied) into outer steel mounting brackets. Align holes from winch frame to outer steel mount and tighten all bolts on inner steel mount only. **See figure 6. WARNING: Winch and frame are very heavy, two person lift is required.**
15. Feed winch wiring to battery. Ensure wiring is protected from sharp edges and other damage. Test winch for correct operation.
16. Splice ECB indicator/park light and fog light wiring into original wiring loome. Use cable locks (supplied). Wiring is accessible under headlamps. If original fog lamps not fitted, an accessory wiring kit will be required. **See figure 7 and 8.**
17. Attach alloy infill (supplied) to top sides of ECB Protection Bar using three M6 x 20 bolts flat washers and nyloc nuts (per side). **Finger tighten only.** Attach 6mm clip lock trim (supplied) neatly under alloy infill across centre of Protection Bar and 3mm clip lock trim (supplied) to top of alloy infill. Trim clip lock trim neatly to match edges of alloy sections. **See figure 9.**
18. Attach 6mm clip lock trim (supplied) to inner edge of skirt cut out for winch. Trim to suit opening.
19. Fit ECB LED indicator / park lights (supplied) into protection bar as per instructions supplied with the LED indicator kit. **NOTE: Ensure park light is to outside. See figure 10.**
20. Attach ECB fog lights to protection bar. Place M6 x 20 bolts, spring washers (supplied) through light mount from inside and attach nut to top. Slide assembly into light mount in Protection bar and centralize light to hole. **See figure 11. Tighten Firm Only. NOTE: Do not fit ECB light trims to protection bar at this point.**
21. Attach ECB Protection Bar to outside of steel mounting brackets. Use one ½ x 1 ½ bolts and two ½ x 2 ½ bolt to lower and rear holes, flat washers, spring washers and nuts (per side). **Finger tighten only. Tighten all steel mounting brackets to chassis.**
22. Align ECB Protection Bar to vehicle. **Tighten all bolts. See figures 12 and 13.** Align and tighten alloy infill to top of protection bar. **NOTE: Alloy infill sits approximately 10mm behind front face of headlight.**
23. Connect ECB indicator/park lights and fog lamps. Ensure wiring is routed in such a manner to avoid any sharp edges etc, and fog lamps are pointed forward and at a slightly downward angle. Check for correct operation. Fit Fog light trims (supplied), large side to inside of bar.
24. Trim lower wheel arch splash guard level with bottom of skirt on Protection bar. Cuts will be required to allow splash guard to sit neatly behind Side of Protection Bar.
25. Attach round plastic trims (supplied) to which control access cut outs in top of channel. **See figure 14.**

ENSURE NUMBER PLATE IS CLEARLY VISABLE

Note: When fitting/refitting the licence plate to the vehicle, ensure there is no obstruction to licence plate vision in accordance with local authorities. If required relocate licence plate to an alternate location.



East Coast Bullbars (ECB Pty Ltd)

Tel: 07 3897 5700

Fax: 07 3283 1168

ecb@ecb.com.au www.ecb.com.au

WORLD'S BEST
ALLOY BULLBARS

29 Snook St
Clontarf QLD 4019
Australia

Po Box 122
Margate QLD 4019
Australia

Further VFPS Notes:

- a) Do not attach VFPS to the vehicle using anchorages not intended for this purpose (e.g. engine mounting bolts).
- b) Do not use this product for any vehicle make or model, other than those specified by the VFPS manufacturer.
- c) Do not remove the plaque or label from the VFPS.
- d) Do not modify the structure of the VFPS in any way.
- e) No accessory or fitment should project forward of the VFPS forward profile.
- f) **ENSURE THESE INSTRUCTIONS ARE LEFT WITH VEHICLE OWNER AND/OR OPERATOR.**

IMPORTANT INFORMATION

Periodically check bolts and nuts for correct tightness, especially if travelling on rough roads

FITTING KIT

2 – ECB Outer Steel Mounting Brackets	4 – 3/8 flat washers
1 – Pair ECB Inner Steel Mounting Brackets	2 – 3/8 spring washers
1 – ECB Steel Winch Frame	2 – 3/8 nuts
1 – ECB Steel control box mount	8 – M6 x 20 bolts.
2 – ECB Steel chassis spacer tubes (15 nb x 78mm long)	14 – M6 flat washers.
1 – Pair ECB alloy infills	2 – M6 spring washers.
6 – ½ x 5 ½ bolts	2 – M6 nuts
8 – ½ x 1 ½ bolts	6 – M6 nyloc nuts
2 – ½ x 1 ¼ bolts	1 – 1650mm length, 6mm clip lock trim.
4 – ½ x 2 ½ bolts	1 – 750 mm length, 6mm clip lock trim
40 – ½ flat washers	2 – 600mm length, 3mm clip lock trim
20 – ½ spring washers	1 – ECB LED Indicator / Park light kit
20 – ½ nuts	1 – Pair ECB Fog Lamps.
2 – 7/16 x 1 ½ bolts	4 – Fog lamp surrounds.
4 – 7/16 flat washers	10 – Cable locks
2 – 7/16 spring washers	6 – 300mm cable ties
2 – 3/8 x 1 ¼ bolts	



Figure 1: Stay mount to chassis, two 15mm bolts

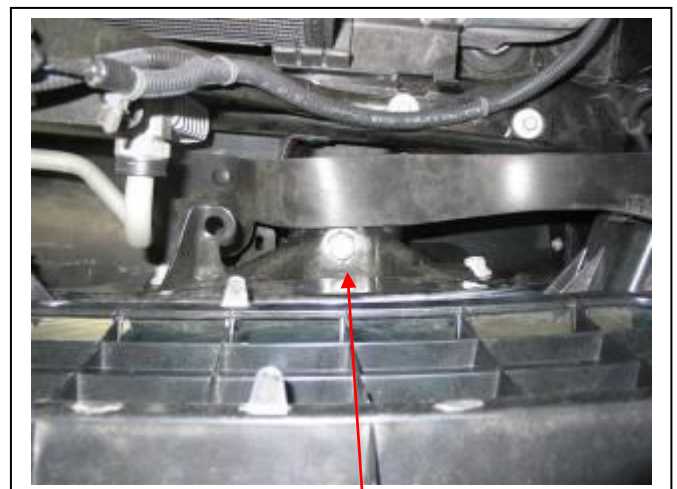


Figure 2: 21mm bolt looking down from behind grille



East Coast Bullbars (ECB Pty Ltd)

Tel: 07 3897 5700

Fax: 07 3283 1168

ecb@ecb.com.au www.ecb.com.au

WORLD'S BEST
ALLOY BULLBARS

29 Snook St
Clontarf QLD 4019
Australia

Po Box 122
Margate QLD 4019
Australia

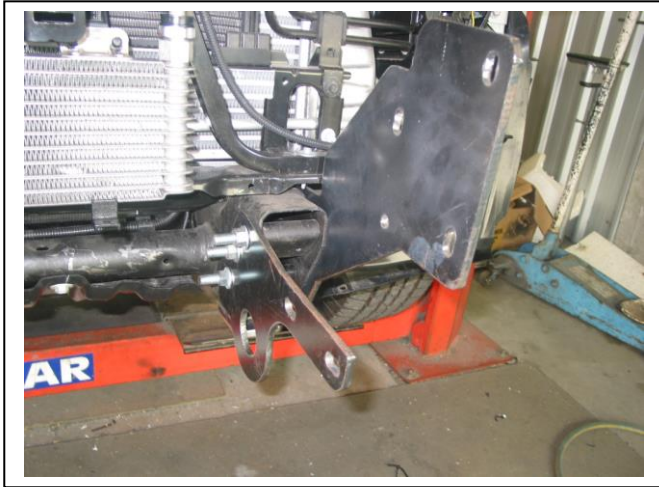


Figure 3: View of mounts no chassis with winch attached



Figure 4: Placement of winch in mount

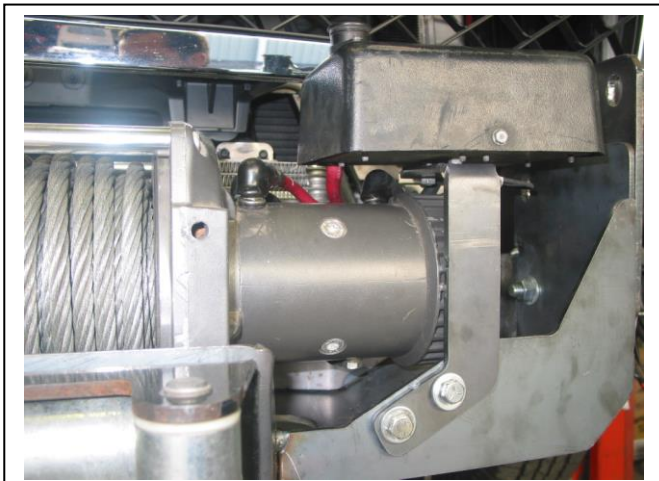


Figure 5: Direction and mounting of winch control box

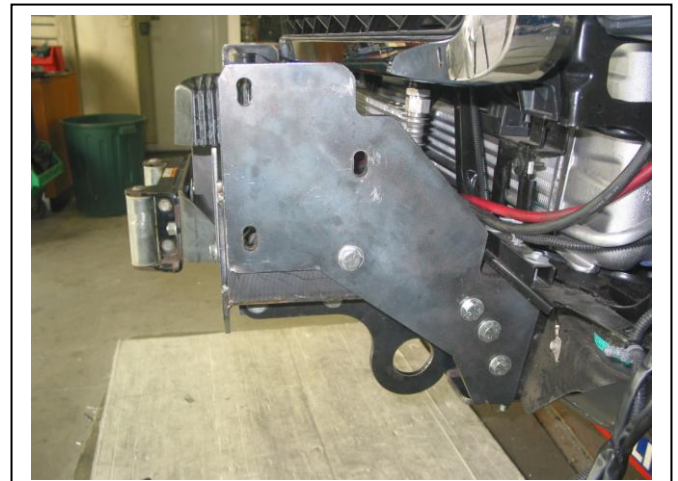


Figure 6: Mounting of winch frame to chassis mount



Figure 7: Wiring harness under driver's headlamp



Figure 8: Point on bumper alloy infill meets 6mm clip lock trim.



East Coast Bullbars (ECB Pty Ltd)

Tel: 07 3897 5700

Fax: 07 3283 1168

ecb@ecb.com.au www.ecb.com.au

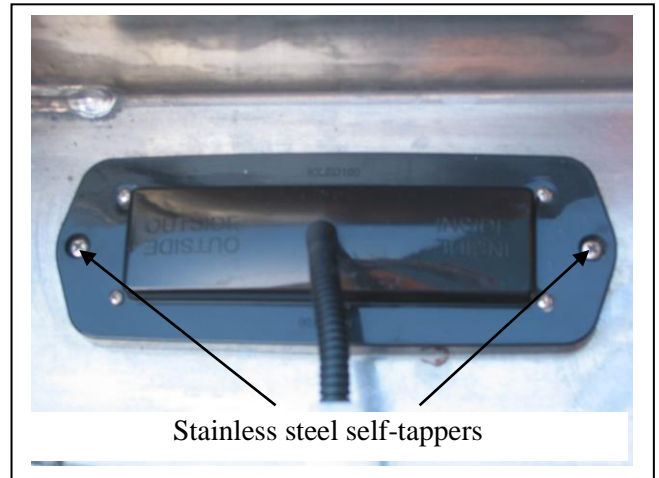
29 Snook St
Clontarf QLD 4019
Australia

Po Box 122
Margate QLD 4019
Australia

WORLD'S BEST
ALLOY BULLBARS

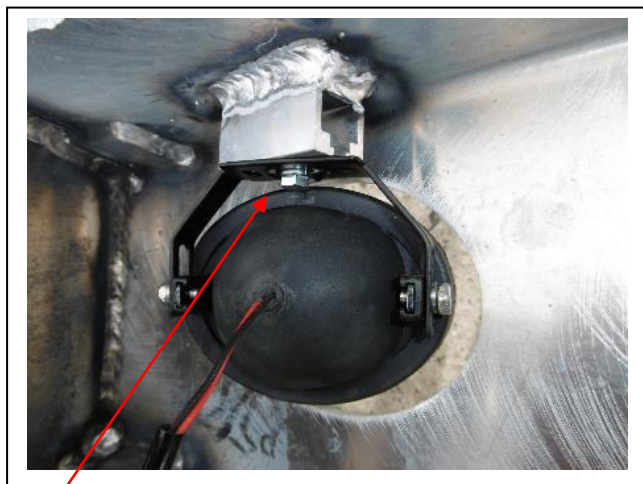


Figure 9: 6mm clip lock trim protrudes past alloy infill and is locked down when bolts are tightened.



Stainless steel self-tappers

Figure 10



M6 bolt

Figure 11



Figure 12: Winch Bar front view shown



Figure 13: Winch bar side view shown



Figure 14



**WORLD'S BEST
ALLOY BULLBARS**

East Coast Bullbars (ECB Pty Ltd)

Tel: 07 3897 5700

Fax: 07 3283 1168

ecb@ecb.com.au www.ecb.com.au

29 Snook St
Clontarf QLD 4019
Australia

Po Box 122
Margate QLD 4019
Australia

We value your comments



**WORLD'S BEST
ALLOY BULLBARS**

East Coast Bullbars (ECB Pty Ltd)

Tel: 07 3897 5700

Fax: 07 3283 1168

ecb@ecb.com.au www.ecb.com.au

29 Snook St
Clontarf QLD 4019

Australia

Po Box 122
Margate QLD 4019

Australia

Dear Fitter,

ECB would like to know how you went with the installation of this product. We value your comment and may need to contact you to clarify some details so please complete your contact details clearly.

We would appreciate if you could complete as many of the following details as possible.

Your Name:	Your contact No.
Product Part No.	Product Invoice No.
Product Description:	Make, model, and year of vehicle:
Product Work Order No.	Company your from/Company product purchased from:

Date of Fitment: ____/____/____

Was the fitting hardware supplied complete? Yes No

If no what was not supplied

Did the installation go well? Yes No

Please provide comments

Please draw diagrams if you need to.

Post to
Reply Paid 122
PO Box 122
Margate QLD 4019

Fax to
(07) 3283 1168



**WORLD'S BEST
ALLOY BULLBARS**

East Coast Bullbars (ECB Pty Ltd)

Tel: 07 3897 5700

Fax: 07 3283 1168

ecb@ecb.com.au www.ecb.com.au

29 Snook St
Clontarf QLD 4019
Australia

Po Box 122
Margate QLD 4019
Australia



WORLD'S BEST
ALLOY BULLBARS

East Coast Bullbars (ECB Pty Ltd)

Tel: 07 3897 5700

Fax: 07 3283 1168

ecb@ecb.com.au www.ecb.com.au

29 Snook St
Clontarf QLD 4019
Australia

Po Box 122
Margate QLD 4019
Australia

DESPATCH CHECKLIST BC55SY

ICZBKCC55



Work Order #	
Finish:	
Transport:	
Due Date:	

- 2 – ECB outer steel mounting brackets.
- 1 – Pair ECB inner steel mounting brackets.
- 1 – ECB steel winch frame.
- 1 – ECB steel control box mount.
- 2 – ECB steel chassis spacer tubes (15nb x 78mm long).
- 1 – Pair ECB alloy infill's
- 1 – Bolt Kit.
- 1 – ECB Indicator / park light kit.
- 1 – Pair ECB fog lamps.
- 4 – Fog lamp surrounds.
- 1 – 1600mm length 6mm clip lock trim.
- 2 – 600mm lengths 3mm clip lock trim.
- 1 – 750mm length 6mm clip lock trim
- 2 – ECB overrides – **Fitted to Bar.**
- 6 – 6mm air scoops – **Fitted to Bar.**

**See other side of
this page for
photos of all
mounts**



Is this product "the best it can be" Yes _____ / _____
Wrapper's initials / Checker initials

If **NO** fix before continuing

All parts checked and completed by:

Nut and bolts: _____ Date __/__/__

Order control: _____ Date __/__/__

Final wrap check: _____ Date __/__/__



East Coast Bullbars (ECB Pty Ltd)

Tel: 07 3897 5700

Fax: 07 3283 1168

ecb@ecb.com.au www.ecb.com.au

29 Snook St
Clontarf QLD 4019
Australia

Po Box 122
Margate QLD 4019
Australia

**WORLD'S BEST
ALLOY BULLBARS**

